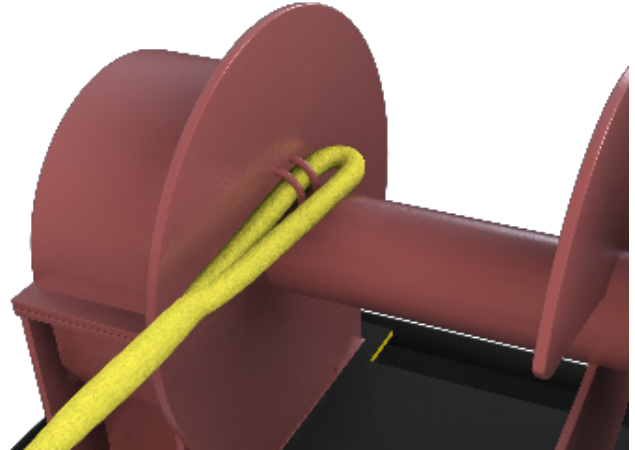


# Timm™ Quick Installation Guide

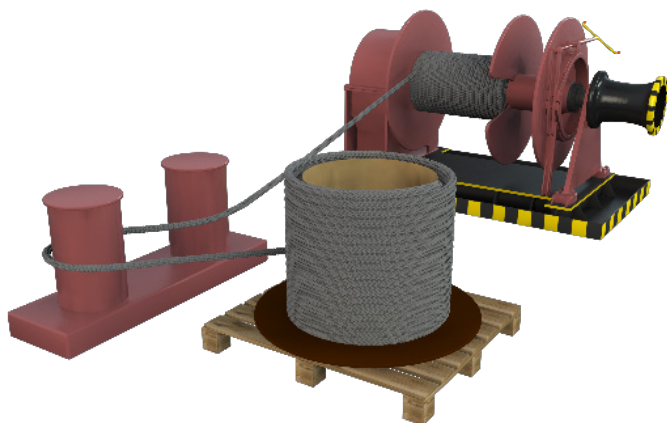
# Split Drum



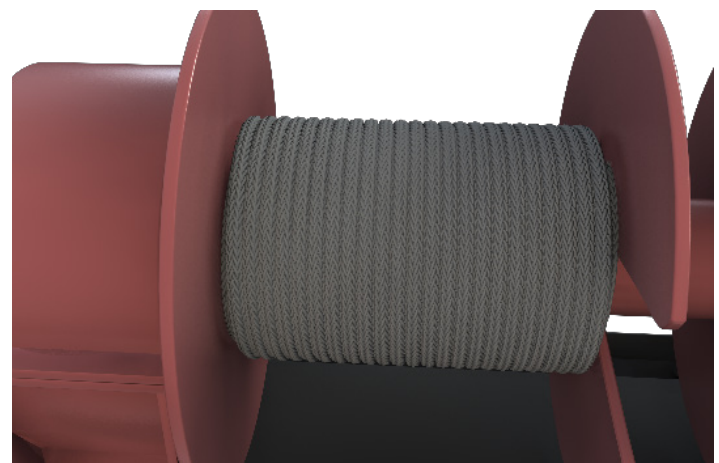
**1.** Prepare the required tools for installation, including a turntable\* and personal protective equipment.



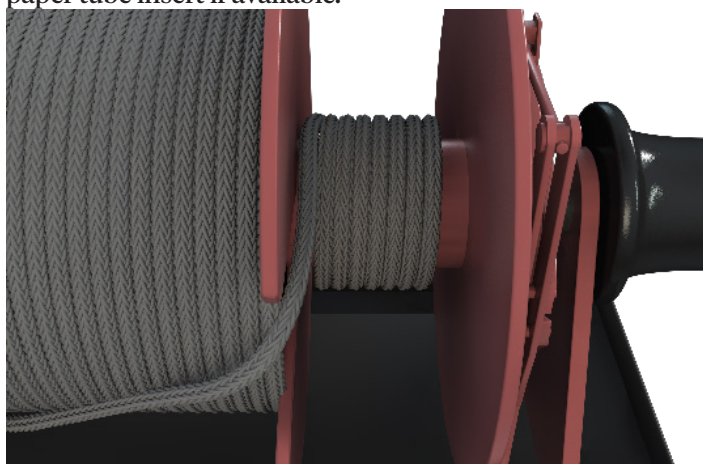
**2.** Attach the rope end securely to the drum of the winch



**3.** When winding, use deck hardware to keep back tension (> 40 kg). Ensure there is no twist on the rope. Use paper tube insert if available.

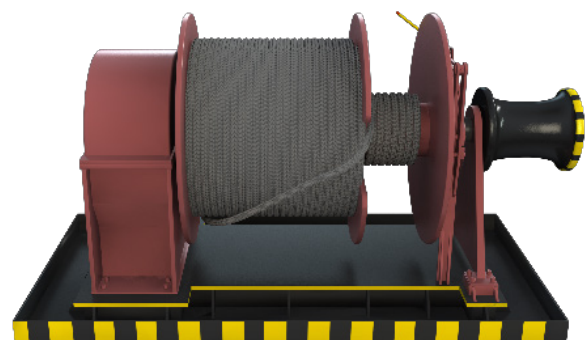


**4.** Building up layers evenly across the drum without gaps.



**5.** Use recommended min. amount of turns on the Tension drum.

Conventional ropes **min. 5 turns**  
HMPE ropes recommended **10 turns**



**6.** Finished installation

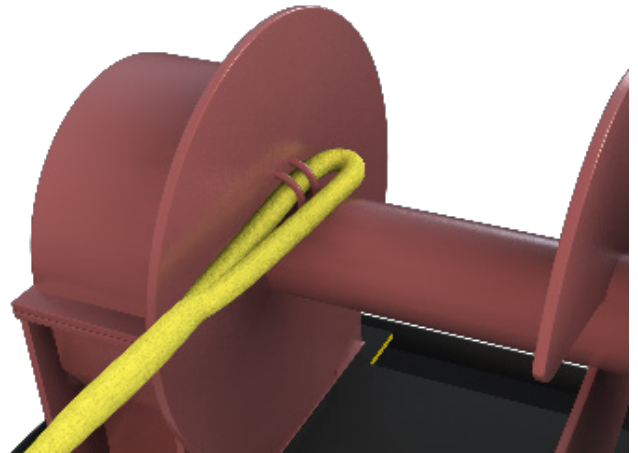
\*The depicted turntable is specifically made for such purpose. If you want to order it, please contact your Sales representative.

# Timm™ Quick Installation Guide

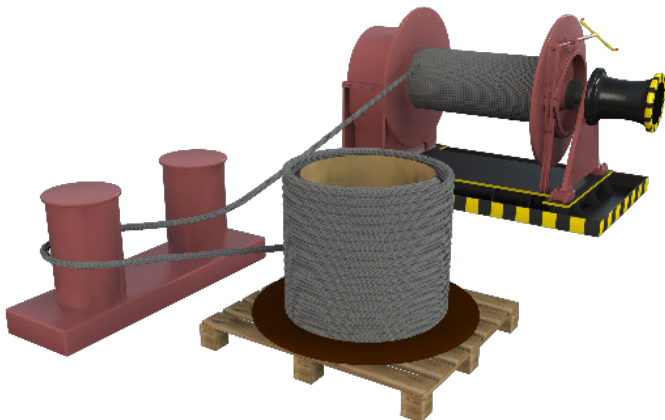
## Single drum



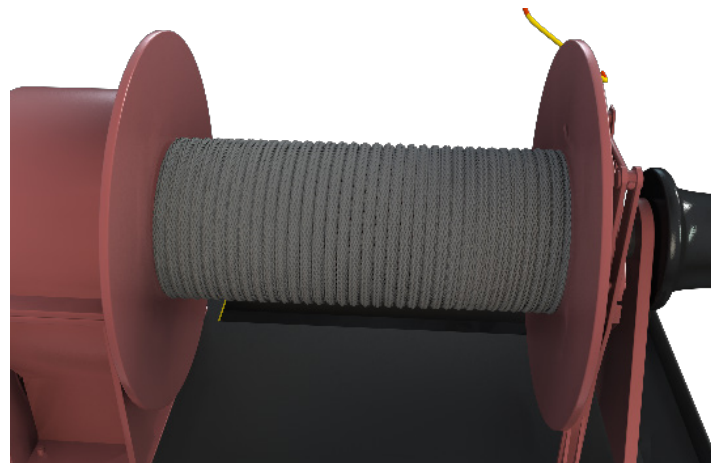
**1.** Prepare required tools for installation, including turntable\* and Personal Protective Equipment.



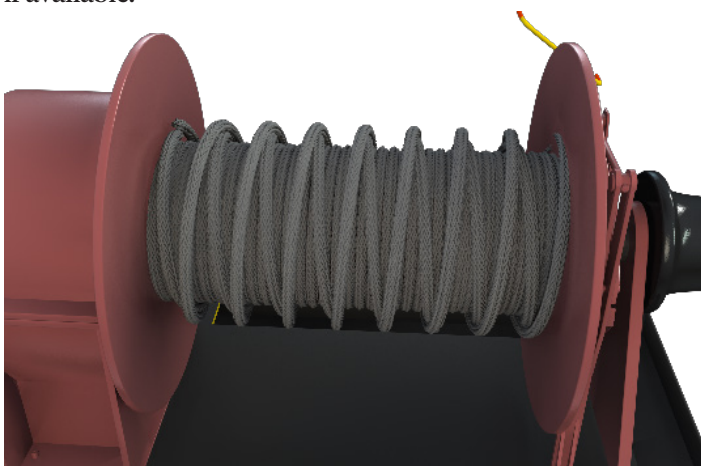
**2.** Attach the rope end securely to the drum of the winch



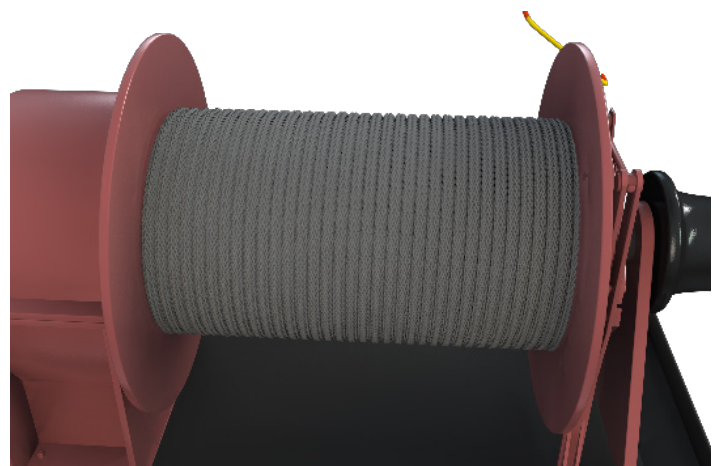
**3.** When winding, use deck hardware to keep back tension. Ensure there is no twist on the rope. Use paper tube insert if available.



**4.** Building up layers evenly across the drum without gaps.



**5.** Combine even layers with cross winding to reduce the risk of burying the rope into the inner layers.



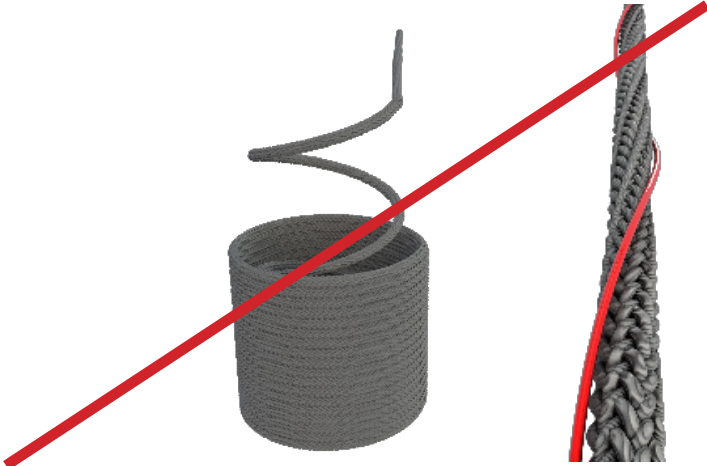
**6.** Finished installation

\*The depicted turntable is specifically made for such purpose. If you want to order it, please contact your Sales representative.

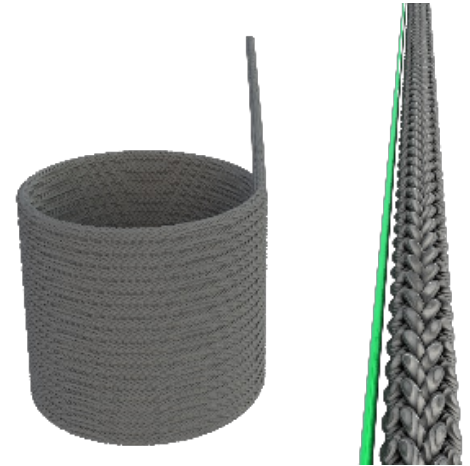


# Timm™ Quick Installation Guide

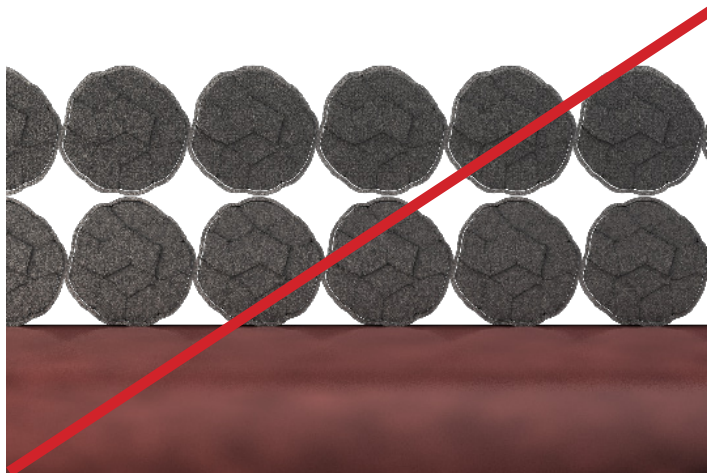
# Dos & Don'ts



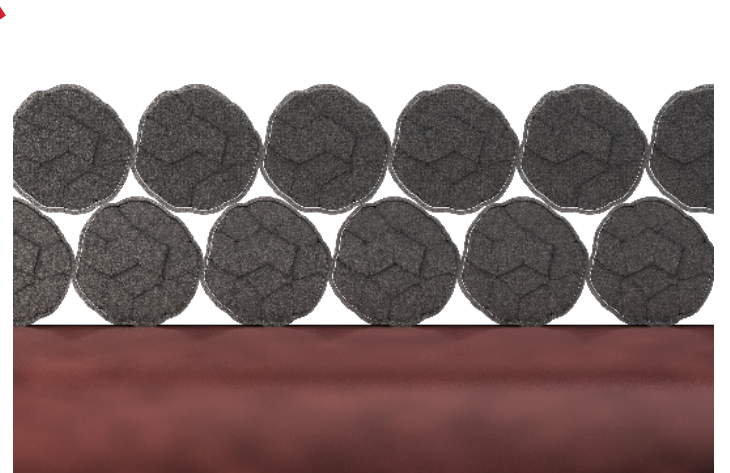
Avoid pulling rope from the center or outer side to prevent twisting the rope.



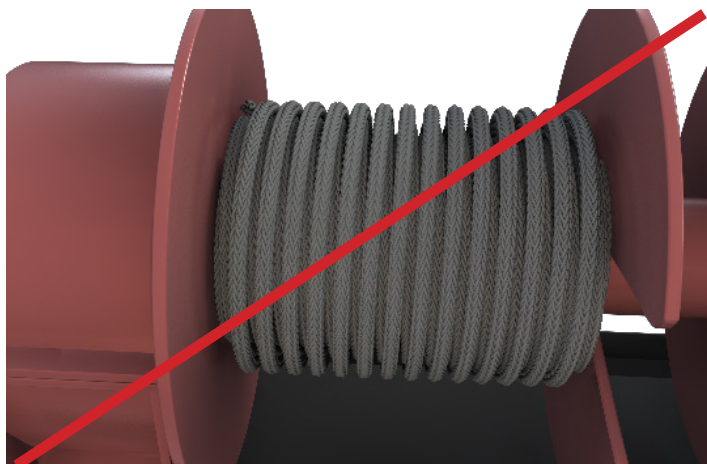
Unwind the rope from the outside by rotating the coil with the help of a turntable.



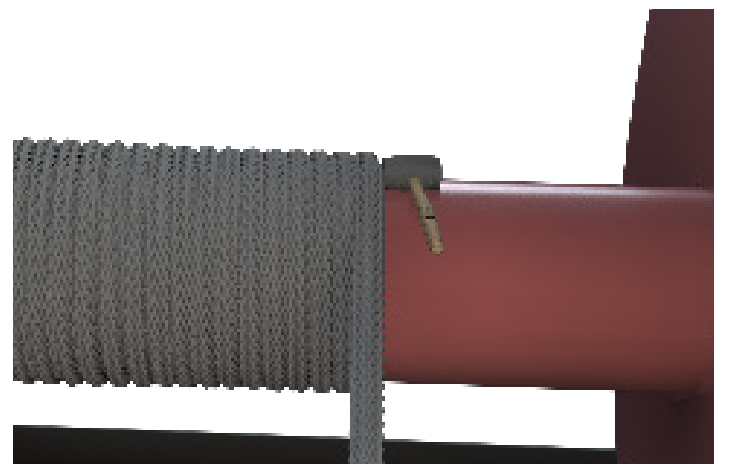
Layer the Rope Evenly to avoid creating space and potential movement of layers due to applied tension.



Properly aligned rope.



Avoid gaps in the layers.



Use a rubber or plastic hammer to tighten the layers.

For more information, check our [Installation Best Practices Manual](#).